

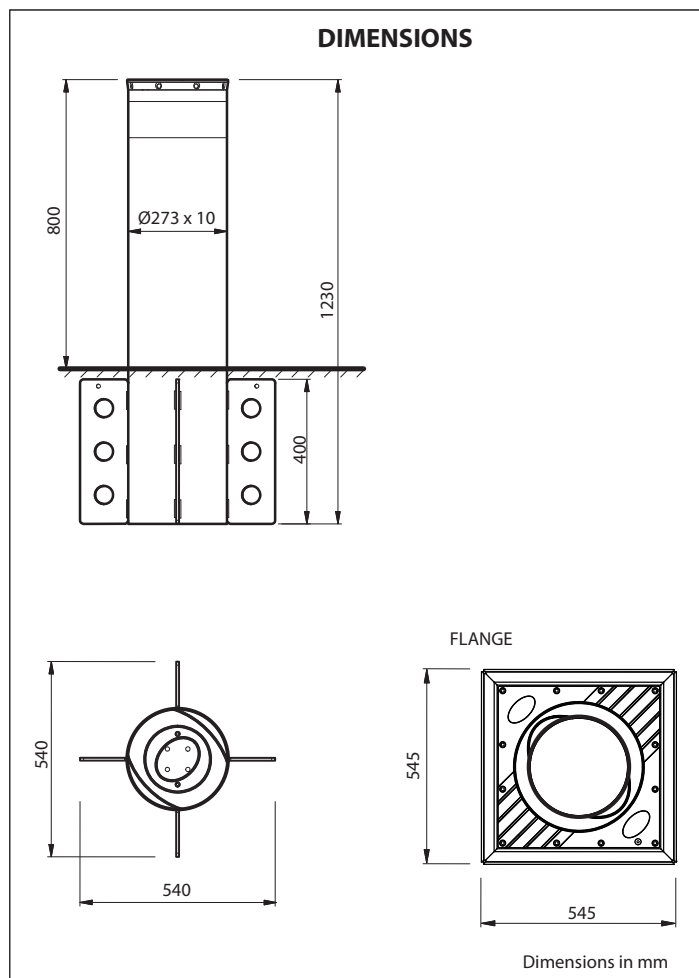


## PRODUCT DATASHEET

# RANCH D Fixed bollard

## Fixed high security bollard

For anti-terrorism applications. High security structure. Reference standards: ASTM2656:2007 M30 – PAS68:2010 7500/50/N2. Available with or without flange.



### • High security fix bollard for anti-terrorism applications

- Main tube dimensions from floor level: **Ø273 x h. 800 x th.10 mm**
- Break-in resistance (from simulation): **667 000 J**
- Impact resistance (from simulation): **150 000 J**
- Available with or without flange
- Flange dimensions: **545 x 545 mm**
- LED provided light cap
- Main tube material: painted steel /stainless steel coating (optional)
- Customizable adhesive reflective H100 film (optional)

### REFERENCE STANDARDS

Anti-terrorism (reference standards): PAS68:2010 7500/50/N2 - ASTM2656:2007 M30 (Replaces DoS/DoD K4)  
Machine directive: 2006/42/CEE (EN60204-1 (2006))  
Low voltage: 2006/95/CEE; 93/68/CEE (EN60204-1 (2006))

## TECHNICAL-ENVIRONMENTAL MAIN FEATURES

<b>Rod out of the ground</b>	Ø273 x h.800 x th.10mm steel Fe 510 (S 335 JR) *
<b>Buried structure</b>	Ø273 x h.430 mm
<b>Foundation</b>	Reinforced concrete. Rebar (not supplied) dimensions: 1 400 x1 400 x h. 750 mm
<b>Break-in resistance (from simulation)</b>	667 000 J
<b>Impact resistance (from simulation)</b>	150 000 J
<b>Driven rod treatment</b>	Cataphoresis and coating RAL7015 standard, other colour on request
<b>Passive visibility</b>	Reflective film **
<b>Flange (optional)</b>	Cast iron, cataphoresis black, 545 x 545 mm
<b>Top cover</b>	Cast iron, cataphoresis black, LED lights
<b>Net weight, versione without flange</b>	86 kg
<b>Gross weight, versione without flange</b>	97 kg
<b>Net weight, versione with flange</b>	109 kg
<b>Gross weight, versione with flange</b>	123 kg

\* Option, AISI304 or AISI316 coating

\*\* Customizable (optional)

## ELECTRICAL FEATURES

<b>Light power supply</b>	ALLU 24Vac 24 Vac ±10%, 50-60 Hz
<b>Power</b>	Light cable 24 Vac ±10%, 50-60 Hz (up to 80 bollards)
<b>Power consumption</b>	1 W for each bollard
<b>Signalling</b>	On the top with high intensity LEDs

**For system composition and installation refer to the regulations in force in the country where the system is being installed.**

## ITEM SPECIFICATION

Fixed bollard high security designed for anti-terrorism programs, suitable to protect sensible sites. High resistance structure. Reference standards: ASTM2656:2007 M30 – PAS68:2010 7500/50/N2. Suitable for integrating the use of automatic bollards. Main tube dimensions: Ø273xH800xth10 mm steel Fe 510 (S 335 JR). Cataphoresis surface finish and powder coating. Impact energy resistance (from simulation) 667 000 J. High reflective adhesive film. LED provided light cap (optional). Power supply 24Vac ± 10%, 50-60 Hz (up to 80 bollards). Power consumption 1W each bollard. Available with or without flange.

